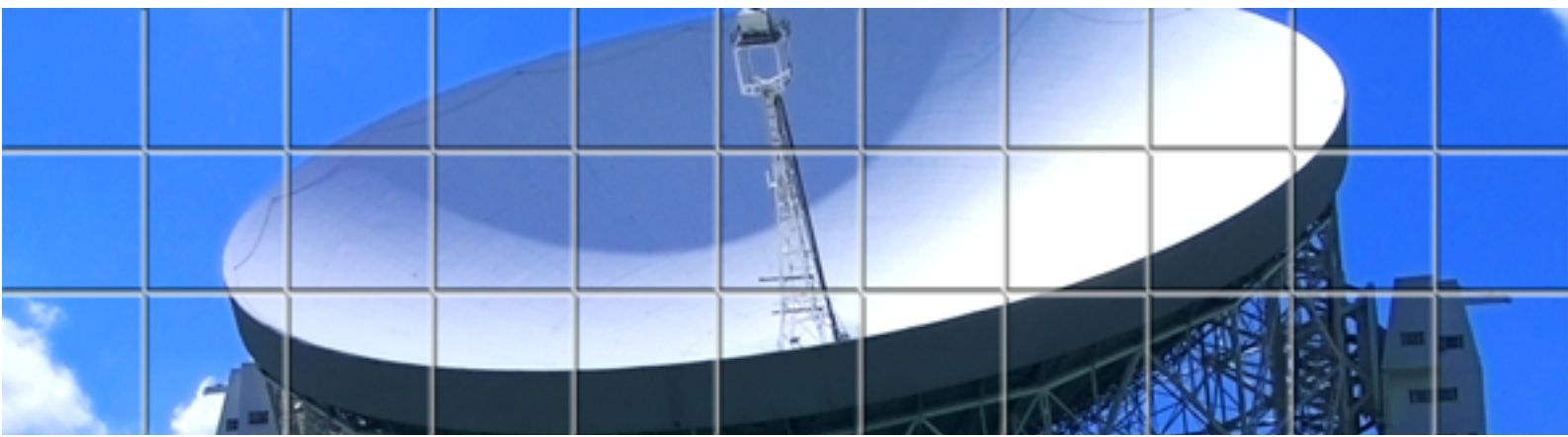


THYCON

Est. 1968



Communications options

Voltage-free contacts

All Thycon products are provided with a standard single voltage-free summary alarm relay that activates whenever an alarm condition occurs. You can monitor the relay, which is rated to 240V/1A, using either normally open or normally closed contacts.

External alarms card

This optional feature provides eight dedicated relay outputs for external, low-level, voltage-free monitoring of any Thycon product.

Alarms for UPS, for example, include:

- new
- summary
- ambient over-temperature
- overload
- battery discharging
- input supply fail
- battery low
- offline

Additional external alarm cards can be installed if separate monitoring systems are to be used. A normally open and normally closed contact is available for each alarm status. Each relay is rated to 240V/1A.

Remote LED panel

This panel utilises external alarm cards to provide visual and audible alarms at a location remote to the Thycon system. It includes *Audible Cancel* and *Alarms Test* push buttons.

SNMP interface

By installing a protocol converter and SNMP interface, computer networks can utilise the SNMP traps provided with all Thycon products.

MODBUS

Industry standard MODBUS over RS232, RS485 or TCP/IP networking is available for PLC style communications. The serial port is electrically isolated

from the power equipment to avoid any possibility of interference with the UPS operation. It supports both 2-wire and 4-wire RTU operation.

The Modbus option provides access to the operating status of the Thycon equipment, including all alarm states and measured quantities, as well as the logged alarms and configuration information.

Thycon power system monitor

A web page server can be included to provide a real-time monitoring function using a standard web browser on any connected PC, either locally or remotely via LAN or WAN.

The web home page displays a mimic diagram of the equipment with key status information and links to associated pages that provide detailed information on status, alarms, measured quantities and online documentation. The web server module incorporates a database to log all equipment measurements at regular intervals. This information is then used to display trend graphs of quantities such as output voltage, current and power on the web browser.

The web server module may also be configured to automatically generate email messages to nominated destinations on specified alarm conditions so that the appropriate personal can be notified immediately when power system events require attention.

Local printer

Printers can be connected directly to Thycon products in order to log alarms and system data either in real time or periodically to record all operating variables.

Remote LCD panel

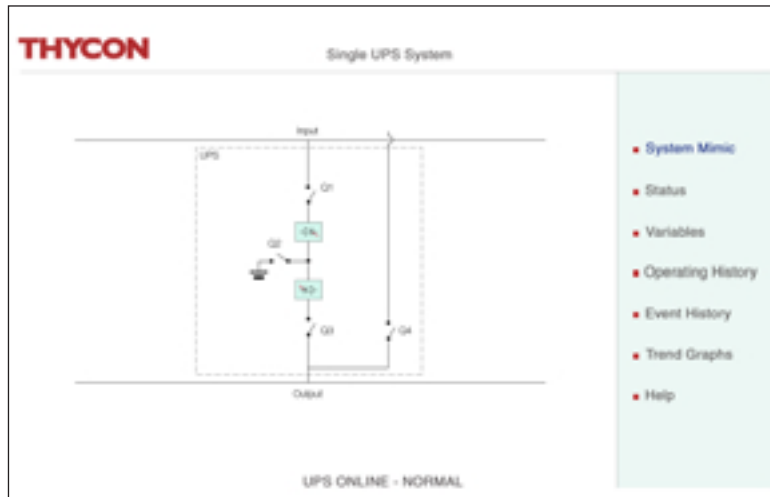
An LCD panel identical to that mounted on the product can be installed at remote sites. Control and emergency stop functions on the remote panel are disabled to prevent accidental shutdown of the equipment.



Thycon power system monitor (front)



Thycon power system monitor (back)



- System Mimic
- Status
- Variables
- Operating History
- Event History
- Trend Graphs
- Help

UPS power system monitor - system mimic

The status screen displays the following information:

UPS ONLINE - NORMAL

- Input supply available
- Bypass supply available
- Rectifier is on
- Inverter is on

- System Mimic
- Status
- Variables
- Operating History
- Event History
- Trend Graphs
- Help

UPS power system monitor - status

The variables screen displays the following data:

Input variables

| | Red | White | Blue |
|-----------------|-----|-------|------|
| Voltage | 254 | 257 | 249 |
| Current | 979 | 978 | 979 |
| Power x | 249 | 251 | 243 |
| Battery voltage | 490 | | |

Output variables

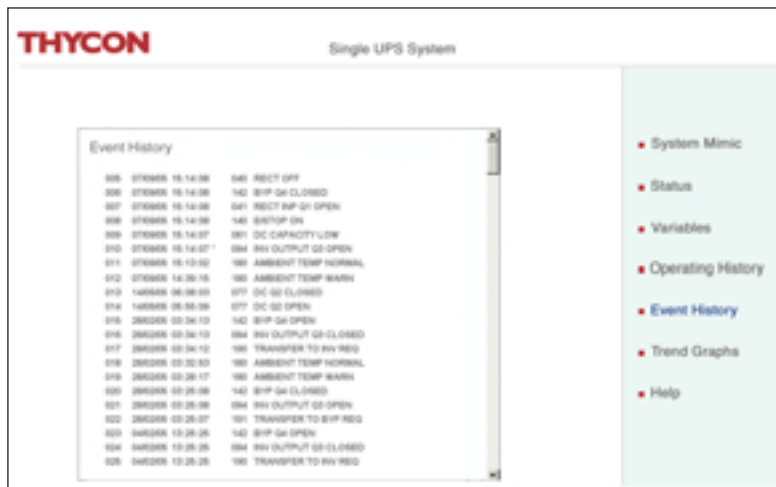
| | Red | White | Blue |
|-----------------|------|-------|------|
| Voltage | 240 | 240 | 240 |
| Current | 1004 | 979 | 1117 |
| Power x | 249 | 234 | 269 |
| Battery current | 0 | | |

- System Mimic
- Status
- Variables
- Operating History
- Event History
- Trend Graphs
- Help

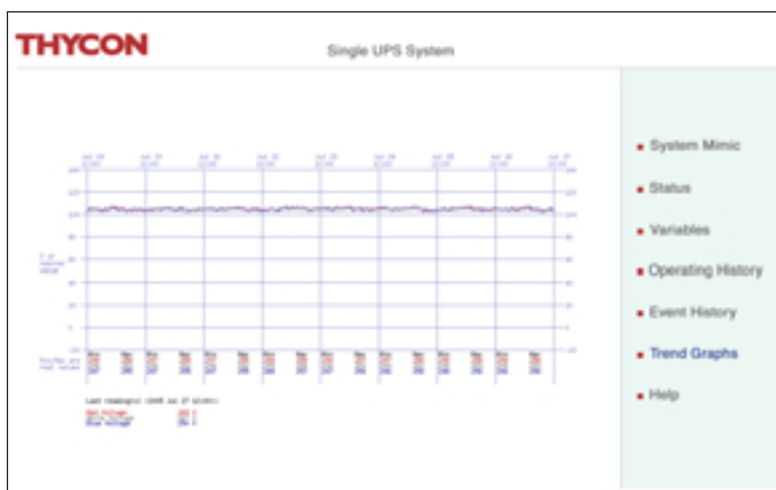
UPS power system monitor - variables



UPS power system monitor - operating history



UPS power system monitor - event history



UPS power system monitor - trend graphs

THYCON

THYCON INDUSTRIAL PTY LTD
20 AUDREY AVE COBURG
3058 VIC AUSTRALIA
PH 61 3 9319 9000
FAX 61 3 9319 9001
ABN 17 068 011 049

THYCON INDUSTRIAL PTY LTD
9 WRIGHTS RD DRUMMOYNE
2647 NSW AUSTRALIA
PH 61 2 9911 6601
FAX 61 2 9911 6602
EMAIL info@thycon.com.au

THYCON INDUSTRIAL PTY LTD
10 LISTER CRESENT AINSLIE
2602 ACT AUSTRALIA
PH 61 2 6161 1548
FAX 61 2 6161 7789
WEB www.thycon.com.au

THYCON INDUSTRIAL PTY LTD
11 PRESTON ST COMO
6152 WA AUSTRALIA
PH 618 9367 0620
FAX 61 8 9457 2597
24-HOUR SERVICE 1800 670 700